

The **ONE TRAY®** System

The **ONE TRAY®** System is a 510(k) Cleared Rigid Container that consists of a base, lid, filter covers, and deck plate constructed of anodized aluminum and stainless steel materials.

With proper care and handling, **ONE TRAY®** will provide years of effective and reliable service.



Compression Force Cam Locking design to ensure optimal lid to base interface

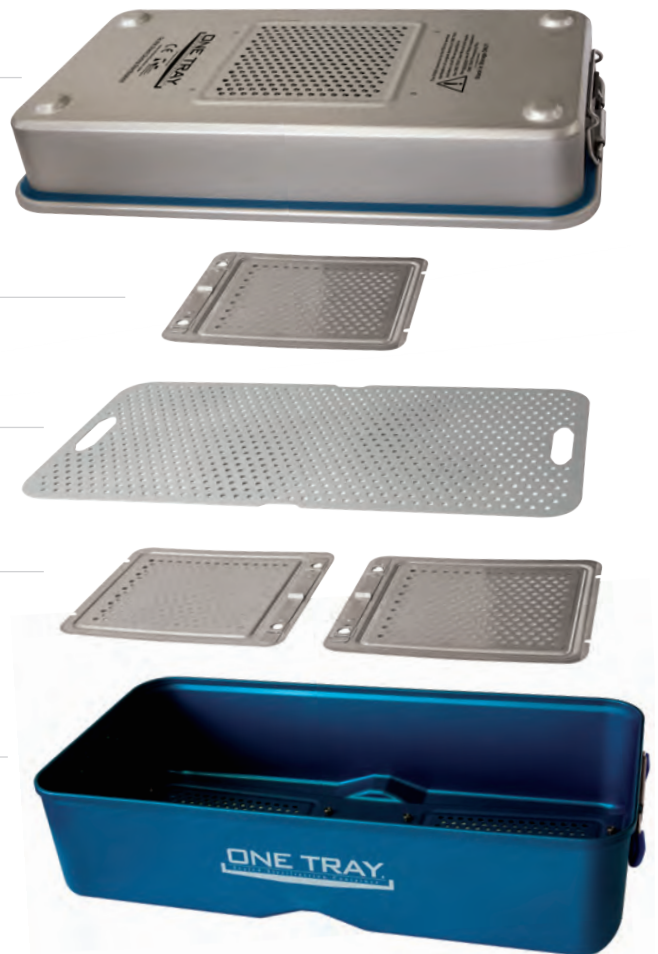
Deck plate elevates instruments off the bottom of the tray



Up close view of "SterObex™ Barrier Technology"

The innovative **SterObex™** barrier assures long term sealing capabilities and sterility maintenance

Unique lip design helps prevent nicks to the top edge of base



Container design enhances thermodynamic steam flow and provides stackability for easy storage after sterilization

Tray Models and Descriptions

Container Catalog #	M2104	M2106	M2108	M2404	M2406	M2408
Description	21" Long I.D. x 12 Wide I. D. 4" Working Height w/ 21' deck plate	21" Long I.D. x 12 Wide I. D. 6" Working Height w/ 21' deck plate	21" Long I.D. x 12 Wide I. D. 8" Working Height w/ 21' deck plate	24" Long I.D. x 12 Wide I. D. 4" Working Height w/ 24' deck plate	24" Long I.D. x 12 Wide I. D. 6" Working Height w/ 24' deck plate	24" Long I.D. x 12 Wide I. D. 8" Working Height w/ 24' deck plate
Volume to Vent Ratio	25.3	38.6	51.8	29.0	44.1	59.3
weight (lb)	9.811	10.499	11.113	10.688	11.294	12.005
weight (kg)	4.450191	4.762262	5.040768	4.847991	5.122868	5.445372
Outside Length (in)	22.25	22.25	22.25	25.25	25.25	25.25
Outside Width (in)	12.5	12.5	12.5	12.5	12.5	12.5
Outside Height (in)	5.5	7.5	9.5	5.5	7.5	9.5
Outside Length (cm)	56.515	56.515	56.515	64.135	64.135	64.135
Outside Width (cm)	31.75	31.75	31.75	31.75	31.75	31.75
Outside Height (cm)	13.97	19.05	24.13	13.97	19.05	24.13
Inside Length (in)	20.771	20.771	20.771	23.771	23.771	23.771
Inside Width (in)	11.616	11.616	11.616	11.616	11.616	11.616
Inside Height (in)	3.818	5.818	7.818	3.818	5.818	7.818
Inside Length (cm)	52.75834	52.75834	52.75834	60.37834	60.37834	60.37834
Inside Width (cm)	29.50464	29.50464	29.50464	29.50464	29.50464	29.50464
Inside Height (in)	9.69772	14.77772	19.85772	9.69772	14.77772	19.85772

Steam Sterilization Parameters

Parameter	Dynamic Air Removal/Pre-Vacuum Steam Sterilization Cycle	Gravity Steam Sterilization Cycle
Exposure Temperature	270°F (132°C)	270°F (132°C)
Preconditioning Pulses	Minimum 3	n/a
Exposure Time	4 minutes	34 minutes
Dry Time	Not required	Not required
Cycle Cool Time	Not required	Not required
Stacking	Not permitted in sterilization cycle	Not permitted in sterilization cycle

Filter Area Specs:

3 Filter Areas:

Filter Area Per: 7.625" x 8.375"

Total sq inches per: 63.85938

Total Container Filter Area: 191.5781